

## The Partnership

The Mackay-Whitsunday region - the gateway to the Great Barrier Reef and 145 tropical islands. The community has a strong enduring connection with its waterways, from fishing and recreation in freshwaters and estuaries, to diving and boating in the waters of the Great Barrier Reef.

As a partnership we can deliver more by working together than as individuals.

“By guiding and contributing to the development of the Report Card the partners will bring local knowledge, challenge results, and have the opportunity to understand better the condition and trend of some of our most important environmental assets.”

*Diane Tarte, Chair of the Partnership*

## Our Objectives

The Partnership is a collaboration between community, industry, agriculture, science, fishers, tourism, Traditional Owners and government. It has been developed to support the establishment of an annual report card on the health of the region's waterways.

Our commitment is to:

- Confirm a long term approach to the management of the region's waterways and marine environment in a holistic manner.
- Communicate information effectively.
- Support decision making.
- Be specific to the Mackay-Whitsunday region.

“Some of the challenges the council faces include urban stormwater runoff and discharge points from sewage treatment plants, which are constantly being reviewed to improve water quality and the health of the reef more broadly. Collaborating with the Partnership has enabled WRC to access the latest monitoring information through the report card. Working with NRM groups Reef Catchments and NQ Dry Tropics council has identified access to better funding and we're starting to target some good investments in the water quality area.”

*Dan Staley – Whitsunday Regional Council*

## Become a Partner

We are seeking your support in becoming a Partner to achieve outcomes for our region. There are many advantages to your involvement in a leading collaboration that is developing a new approach to reporting on waterway health in the region.

Partners are committed to sharing regional knowledge, program actions and monitoring and research information to assist in a broader understanding of the health of catchments, rivers and Reef. This understanding will help us as a community to work together to determine how and where we can do more to look after our waterways.

| Funding Category             | Annual Membership Contribution (excl GST) | Example of who could be in this category   | Vote       |
|------------------------------|---|--|------------|
| <b>Contributing Partners</b> |   |  |            |
| Tier 1                       | \$1,000-\$5,000                           | Local Businesses, Small Companies and small public utilities, Peak Industry Associations                 | <b>Yes</b> |
| Tier 2                       | \$5,000-\$10,000                          | Regional NRM Bodies, Medium Companies, Medium public utilities, Universities, and Research Organisations | <b>Yes</b> |
| Tier 3                       | \$25,000-\$100,000                        | Large Companies/ Industry/Coal Terminals, Port Authority   | <b>Yes</b> |
| Government Tier              | \$20,000                                  | Regional Council   | <b>Yes</b> |
|                              | \$100,000                                 | Commonwealth Government  | <b>Yes</b> |
|                              | \$250,000                                 | State Government   | <b>Yes</b> |
| <b>Honorary Partners</b>     |   |  |            |
|                              | Nominal \$50                              | Community  | <b>Yes</b> |
|                              | Nominal \$50                              | Traditional owners   | <b>Yes</b> |
|                              | Nominal \$50                              | Conservation   | <b>Yes</b> |
| <b>Observers</b>             |   |  |            |
|                              | N/A                                       | Interested non-members   | <b>No</b>  |

NB: GST payable.



## Contact

**Executive Officer of the Mackay and Whitsundays  
Healthy Rivers to Reef Partnership**

Phone: Charlie Morgan 0457 306 152  
email: [info@healthyriverstoreef.org.au](mailto:info@healthyriverstoreef.org.au)

[www.healthyriverstoreef.org.au](http://www.healthyriverstoreef.org.au)

# VALUE PROPOSITION



## OUR VISION

For healthy rivers and Reef contributing to a prosperous and iconic region where people visit, live, work and play.



**HEALTHY RIVERS TO REEF PARTNERSHIP**  
MACKAY-WHITSUNDAY

## Partner Benefits

### Access to reliable and scientifically supported information

Be informed about waterway and reef health, through understanding monitoring and results which will be collated and distributed to members first – giving you the ability to proactively promote your organisation’s commitment to best practice management.

“I’ve made presentations on the Pilot Report Card to the tourism industry and the Local Marine Advisory Committee (LMAC). The information has also allowed me to lobby politicians and local leaders, assisting them in understanding the issues we are facing due to water quality and the economic impacts this may have on our industry and the broader community.”

**AI Grundy – Tourism Whitsundays**

### Community recognition and promotion

Partners have an opportunity to be recognised as an active participant in not only the communication of the health of the region’s waterways, but connection with the future management of one of the world’s greatest assets – the Great Barrier Reef.

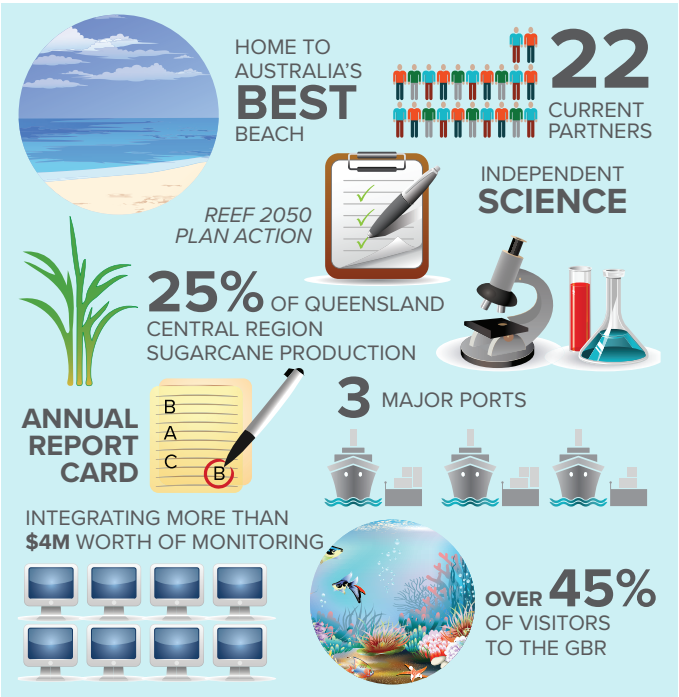
Support nested and integrated reporting of the health of the region, informing future management for the region now and into the future.

“The whole idea of making our waterways healthier is the greatest benefit. This will improve water quality and fish habitats, in the long term increasing fish stocks which every recreational fisher wishes for.”

**John Bennett – Mackay Recreational Fishers Alliance**

“The lifestyle choices of a large proportion of the community within our region revolve in some way, shape, or form around the water. Fishing, in one of our numerous estuary systems or simply lazing around on a beach....the water, it’s health and the ecosystems that depends on it are at the forefront of our minds. The inclusion of so many highly regarded industry Partners is testament to this fact. Coming together to discuss current monitoring programs and establishing where the gaps lay is imperative to achieving a common goal moving forward. The Partnership provides this platform.”

**Gerard Carlyon – Mackay Regional Council**



### Collaborative opportunities

Network between organisations to build relationships and share information, for future generations, whilst engaging with community and government.

Partners share in a collective vision and commitment to a common goal of improving the region’s future management for waterway and reef health.

“It’s extremely worthwhile being involved in a partnership which brings together the major local industry sectors, councils, government departments, GBRMPA and other interested parties to engage community, discuss opportunities and support plans which lead to improved water quality in the GBR. It has increased my personal network of like-minded people who want the best outcomes.”

**AI Grundy – Tourism Whitsundays**

## Linkages with other programs

The Partnership is committed to ensuring the nesting and alignment of the report card with other reef-wide and regional programs. These include the Reef 2050 Long-Term Sustainability Plan, the Great Barrier Reef Marine Park Authority (GBRMPA) Reef Outlook Report and associated integrated monitoring and other reporting programs such as Paddock to Reef.

## Integration of regional monitoring data

The Partnership provides a platform to share and integrate the results from existing monitoring programs in the region, in turn creating a more complete picture of waterway and reef health for our region. By doing more with the information from existing monitoring programs, redundancies and gaps can be identified to provide better information to the community in a more cost effective way.

“NQBP has some of the most comprehensive marine monitoring programs on the Queensland coast. Providing all of the data we collect to the Mackay Whitsunday Healthy Rivers to Reef Partnership in producing the Regional Report Card is simply smart.”

**Kevin Kane – North Qld Bulk Ports**

## The report card

The annual Mackay-Whitsunday waterway health report card seeks to establish a collaborative approach that integrates environmental, social, economic and cultural information; and builds upon and integrates existing monitoring, modelling, recording and reporting efforts at the sub-catchment, catchment and reef-wide scale.

The report card provides comprehensive scientific information in easy to understand diagrams.

